

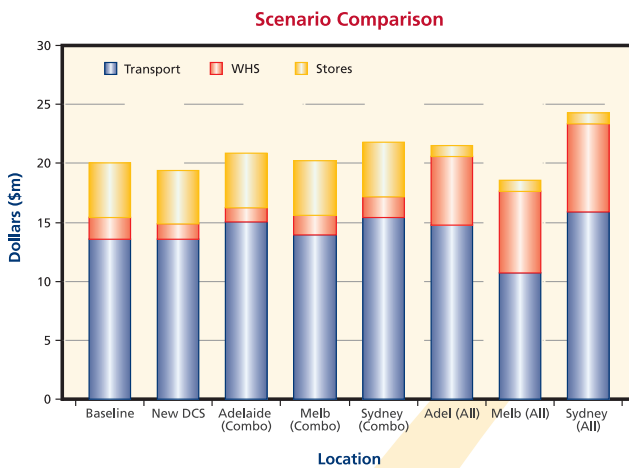


Decision Support

Supply chains often comprise a maze of complex inter-dependencies and variables. Constructing new manufacturing plants or distribution centres can dramatically change your supply chain distribution flows and costs. Moving where products are stored or changing from local sourcing to international sourcing are actions that you want to get right the first time.

How can you be sure that the decisions you make are the best for your future?

Lexian draws on its significant experience with leading edge supply chain optimisation modelling tools to assist organisations get these decision right the first time. Lexian can assist you in:



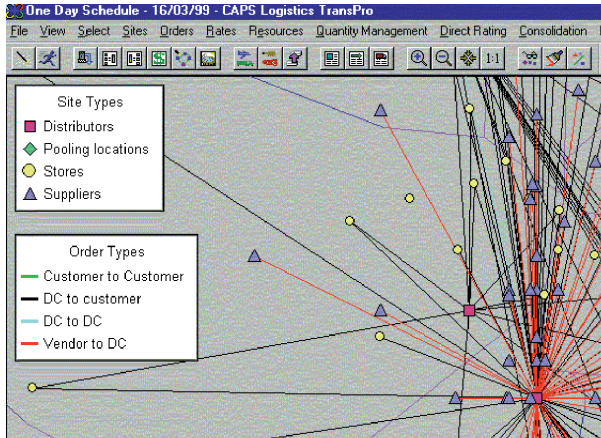
- ◆ Evaluating the cost and service impact of alternative modes of operation ("what if") for your supply chain.
- ◆ Quantifying the supply chain effects of changes in demand over time.
- ◆ Optimising static and dynamic vehicle delivery schedules.
- ◆ Simulating changes to your supply chain to highlight bottlenecks and prioritise improvements.

A Lexian supply chain optimisation project follows a structured format. The main phases in the project include:

- ◆ Initial scoping to provide an accurate assessment of the key supply chain issues requiring resolution, the availability of data, the potential savings, and the project timetable and cost.
- ◆ Formation of project team.
- ◆ Collection of detailed data.
- ◆ Development of a baseline for model calibration.
- ◆ Scenario generation and modelling.
- ◆ Final presentation of results and project report.

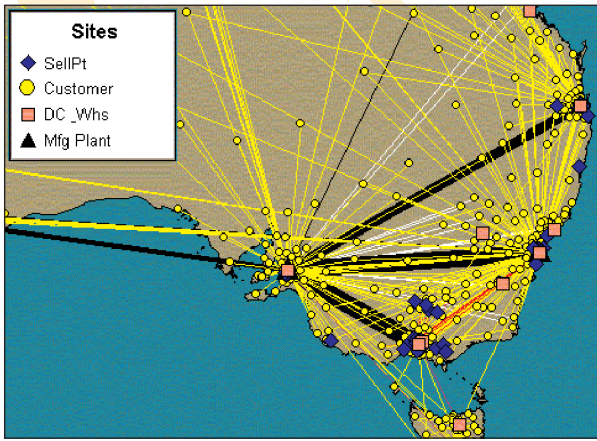
Providing decision support tools to analyse, model and design the supply chain that fulfils your business objectives.

| ID | WBS | Task Name | Duration | Timeline | | | |
|----|-----|--|----------|--|-----|------|------|
| | | | | April | May | June | July |
| 0 | 0 | Supply Chain Optimisation | 77 days | [Yellow bar spanning from start of April to end of July] | | | |
| 1 | 1 | Phase 1:- Operational Review | 10 days | [Red bar in early April] | | | |
| 10 | 2 | Phase 2:- Data Collection | 25 days | [Red bar from mid-April to mid-May] | | | |
| 28 | 3 | Phase 3:- Run & Cost Scenarios | 25 days | [Red bar from mid-May to mid-June] | | | |
| 33 | 4 | Phase 4:- Final Report & Recommendations | 15 days | [Red bar in late June/early July] | | | |
| 40 | 5 | Close Project | 2 days | [Red bar at the very end of July] | | | |

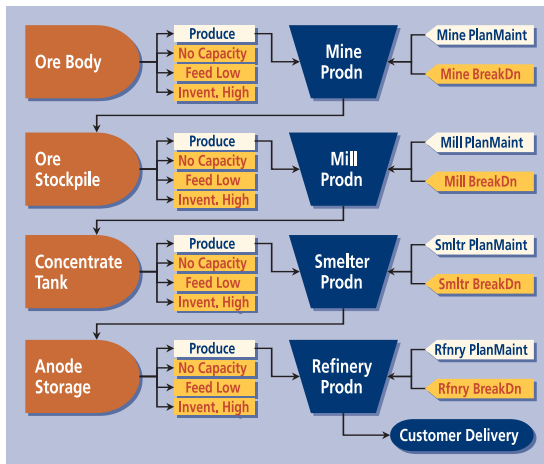


Lexian has extensive experience in the following software tools:

- ◆ Supply Chain modelling (including CAPS Supply Chain Designer).
- ◆ Routing and scheduling (including CAPS RoutePro).
- ◆ Simulation modelling (including Arena and iGraphics).
- ◆ Database and spreadsheet analysis.



Screen shot of CAPS TransPro and Supply Chain Designer



Lexian's value proposition in decision support is to offer customers an opportunity to assess the impact of various supply chain scenarios at a fraction of the risk and cost associated with the actual implementation of those decisions.

Lexian has been modeling supply chains for major companies since 1995. Supply chain savings of between 5% and 20% have been identified and implemented within a twelve month time frame. Lexian has the experience and know-how to optimise your supply chain.