

# LEXIAN DISPATCH MANAGER



Lexian Dispatch Manager (LDM) is a multi-user database application designed to automate and improve the efficiency of the distribution process for businesses of any size. The Dispatch Manager is part of a suite of Lexian supply chain tools including Procurement Manager, Warehouse Manager, Inventory Optimiza and Asset Manager.

## Key benefits of the system are:

- ◆ Efficient load creation through forward visibility of orders
- ◆ Efficient utilisation of vehicles with volume information available to the route planners to ensure that vehicles are filled to capacity
- ◆ Automatic rating and reverse billing for driver and /or subcontractor payments
- ◆ Feedback to production planning to ensure orders are ready when the load is due to be dispatched
- ◆ Comprehensive KPI reports on all distribution activities
- ◆ Web interface.

## System Features include:

### System

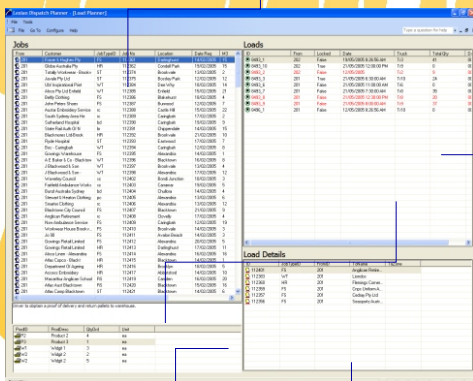
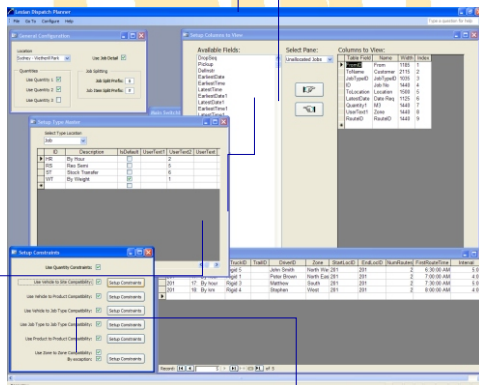
- ◆ Full customisation of fields
- ◆ User security at database level
- ◆ Automatic archiving of data.

### Order Acquisition

- ◆ Automatic download from ERP host system
- ◆ Manual entry or update facility via terminal or web interface
- ◆ Order detail to product line item level.

### Load Planning

- ◆ Drag and drop orders onto vehicles
- ◆ Time, capacity and eligibility constraint rules
- ◆ Part orders can be loaded
- ◆ Driver/vehicle manifest and time sheet produced
- ◆ List of unallocated orders maintained
- ◆ Freeform text area for keeping notes and instructions for the selected order in either the Unallocated Orders pane or the Route Details pane
- ◆ Sort capability on all list fields
- ◆ Exception reports and alerts if constraints are breached
- ◆ Ability to query on any field
- ◆ Automatic calculation of route drive times and distances.



## Updating Route Details

- ◆ Capture of actual delivery times via driver run sheets
- ◆ Ability to configure and record delay information
- ◆ Data checks to ensure authenticity of information
- ◆ User defined fields.

## Reporting

- ◆ Each report has its own selection criteria dialog specifically written for the report
- ◆ Data underlying all reports can be exported as text files or Microsoft Excel spreadsheet files
- ◆ Flags indicate which activities have been invoiced and/or paid
- ◆ Rating information is stored in the driver or truck master files and the rating logic is built into the reporting process
- ◆ Web interface for all reports.

## The Dispatch Manager Process

